



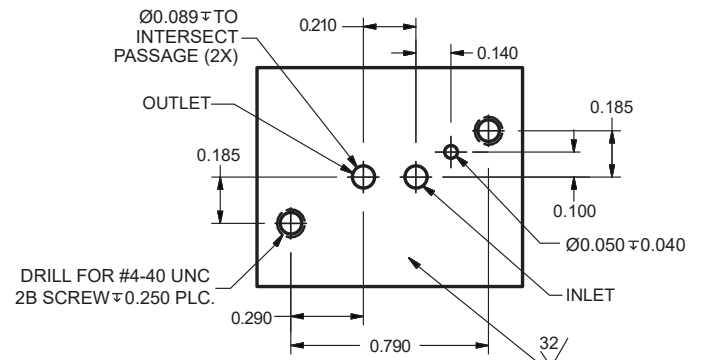
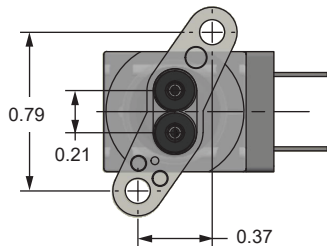
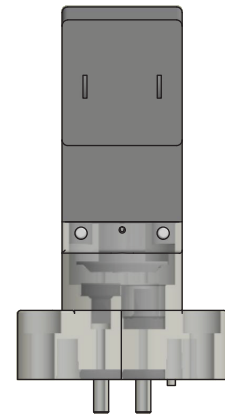
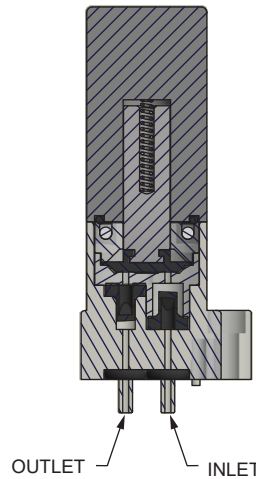
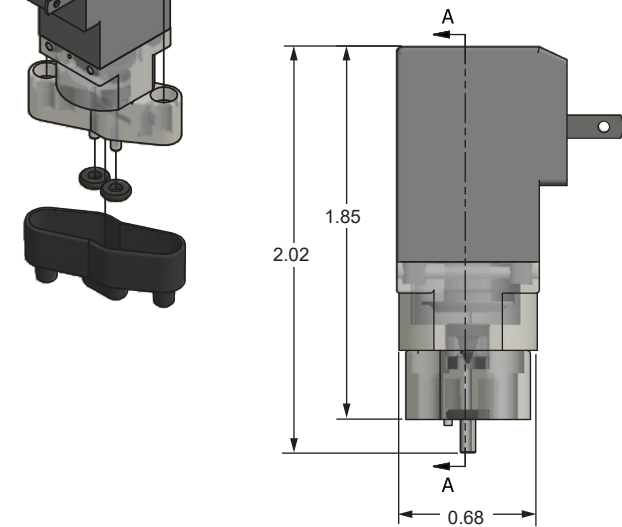
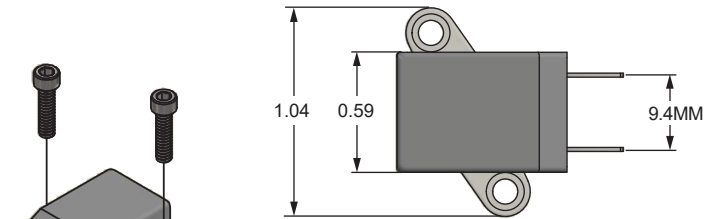
Series SSDP15

Electro-Fluidic Miniature Fixed Displacement Solenoid Pump

The Spartan Scientific Series SSDP15 high precision, fixed volume, fluidic diaphragm solenoid pump is an inert miniaturized pump in an environmentally resistant package that features a fully encapsulated solenoid design offering flying leads, AMP Faston crimp or industry standard quick connector with or without indicator lights. The SSDP15 features a flexible-use form factor interface for a manifold with O-ring static seals or single use models using 1/16" tubing. This self-priming pump draws a low 3.5 watts and is available in 24VDC. The SSDP15 can dispense up to 10.5 mL/min continuous duty cycling at 5 Hz. The maximum cycle rate is 6 Hz and is designed for 20 million cycles of service. It has been designed from the ground up to work within the rigorous environments of scientific and medical industries who employ the need for finite control of fluids.

Dimensional Data

ALL DIMENSIONS ARE IN INCHES UNLESS OTHERWISE NOTED



MOUNTING HOLE / PASSAGE PATTERN



Series SSDP15

Electro-Fluidic Miniature Fixed Displacement Solenoid Pump

Technical Data

Function: 2-Way, 2-Position; Metering Diaphragm Pump Solenoid Operated; Normally Closed

Fluidic Interface: 1/16" I.D. Tube Barb (2) or Manifold mount with #4-40x7-16" and standard O-rings (2)

Dispensing Volume: 37µl dispensed per shot ± 3µl. Self-Priming

Temp. Range: Fluid Max.: +60°C
Dry Range: Ambient +10° to +50°C

Response Time: up to 6 Hz Complete Cycle

Media: Liquid chemicals, water
(contact factory for compatibilities)

Environment Protection: IP65 (IEC 144), NEMA 4
Dust-tight and water resistant
(with electrical connector)

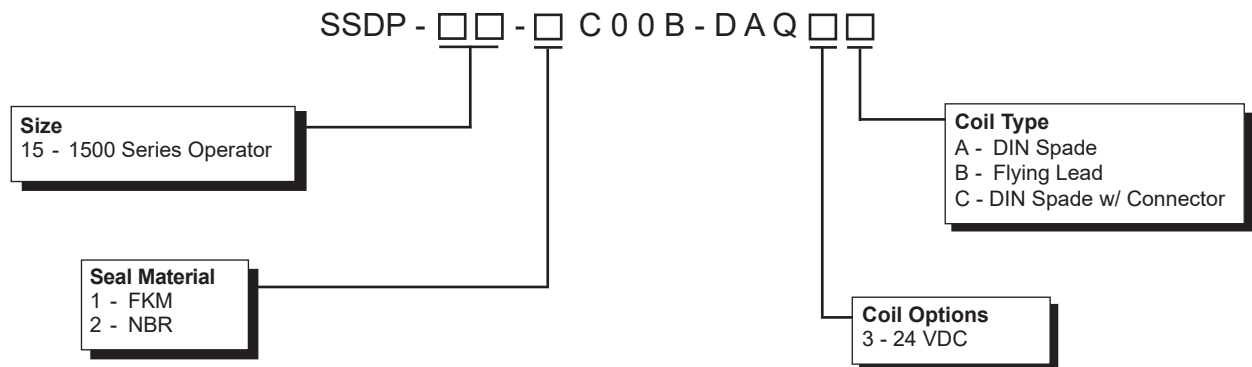
Wetted Materials: Elastomers: FKM, NBR
(other materials available on request)
Valve Body: Polycarbonate

Coil Data: Encapsulation: Glass-Filled Nylon
Insulation: Class F
Power Rating: 3.5 Watts
Voltage: 24 VDC (others available on request)
Voltage Tolerance: +/- 10% Nominal
Winding: Class H

Connections: Spades: Accordance with AMP 2.8x0.5; 9.4mm
Flying Lead: PVC 22 AWG, Multi-Strand Copper Wire, 300V, 15" minimum length

Packaged Weight: 0.11 lbs.

How To Order



Order Example: SSDP-15-1C00B-DAQ2A
1500 Series Operator, FKM,
24 VDC, DIN Spade